

**3in1 Stereo-Kopfhörer
»ME 487«**

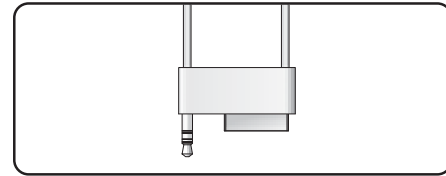
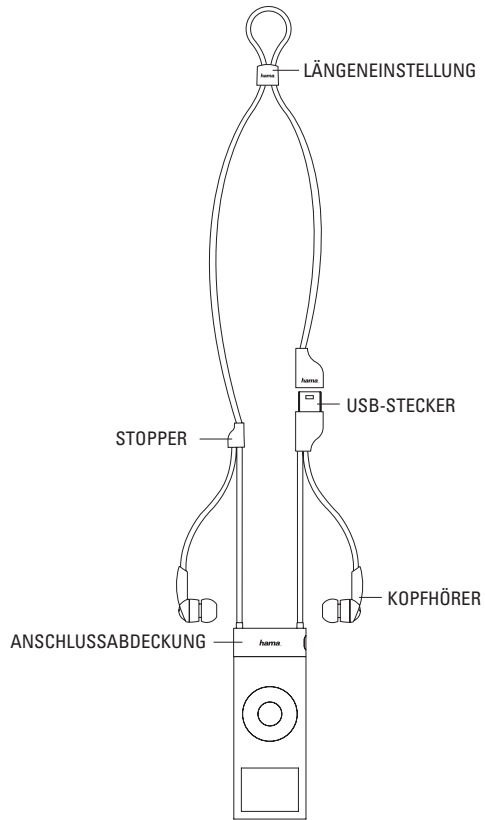
**3in1 Stereo Headphone
Casque stéréo 3en1**

hama[®]

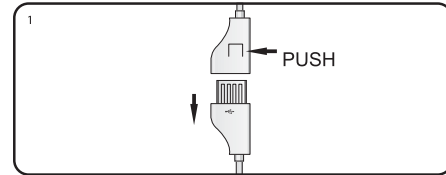
**Hama GmbH & Co KG
D-86651 Monheim/Germany
www.hama.com**



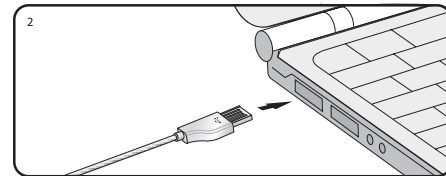
00014487/01.07



1. Stecken Sie den Anschluss des Halstragebands in Pfeilrichtung an Ihren iPod nano an. Ziehen Sie den USB-Stecker in Pfeilrichtung aus der Anschlussabdeckung des Halstragebands heraus.

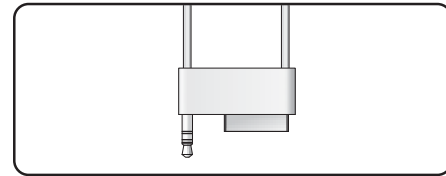
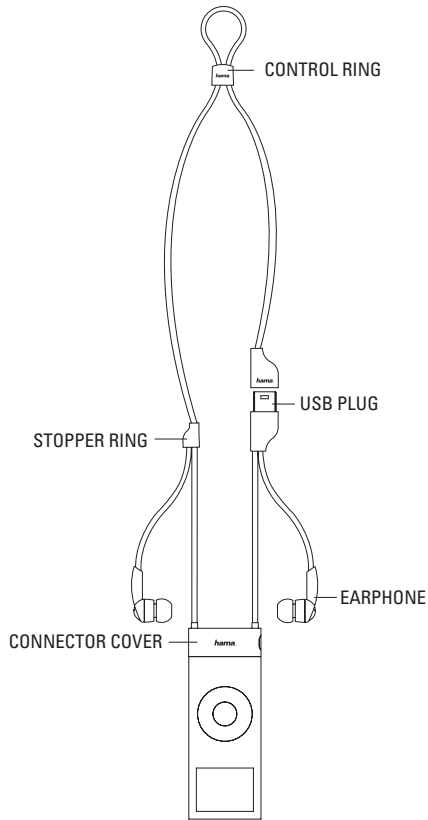


2. Stecken Sie den USB-Stecker des Halstragebands in den USB-Anschluss Ihres Computers.

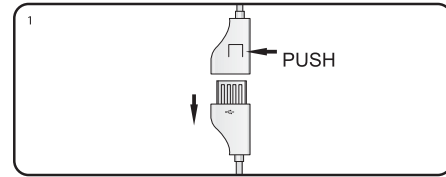


Achtung:

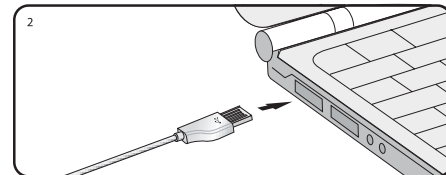
- Achten Sie beim Anschließen des USB-Kabels an Ihren Computer darauf, dass der USB-Stecker richtig herum eingesteckt wird. Der USB-Anschluss ist nicht bei allen Computern gleich ausgerichtet.
- Lassen Sie den iPod nicht am Halstrageband baumeln. Dabei kann sich der iPod vom Halstrageband lösen.



1. Insert the lanyard connector into your iPod nano to the arrow direction.
Pull out the USB plug from the top of lanyard connector cover to the arrow direction.

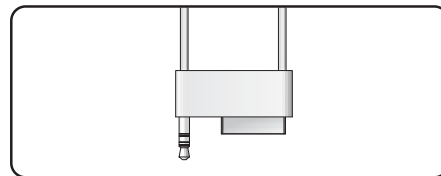
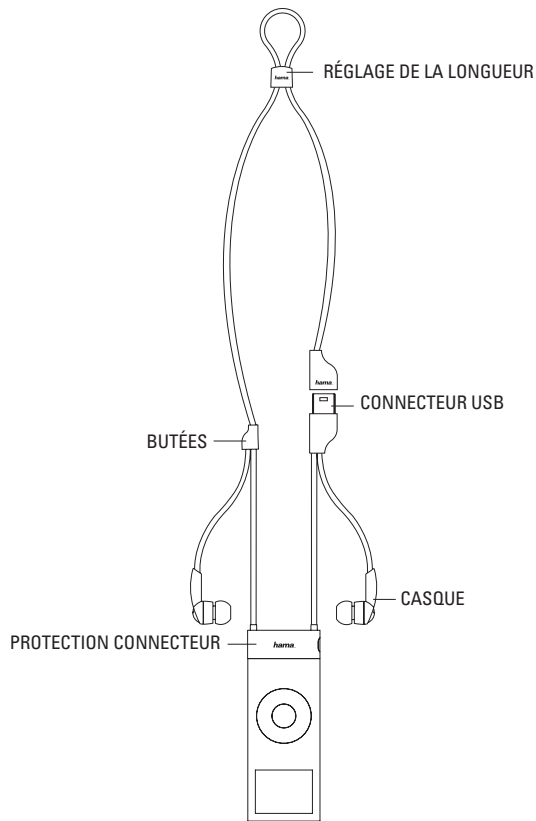


2. Connect the lanyard USB plug into the USB port of your computer.

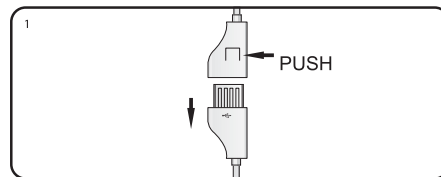


Caution:

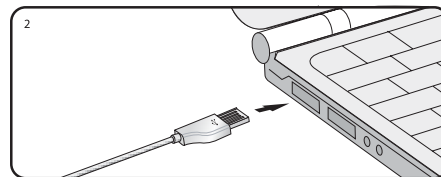
- When you connect the USB cable into the computer, make sure the USB plug is oriented properly. Some computers may have USB port upside down.
- I don't swing iPod nano with the lanyard, it may loose iPod nano from the lanyard.



1. Enfichez dans votre iPod nano la fiche de raccordement du tour de cou, en respectant le sens de la flèche. Sortez le connecteur USB hors de la protection du tour de cou, en tirant dans le sens de la flèche.

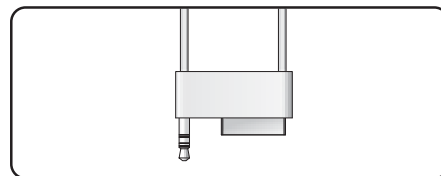
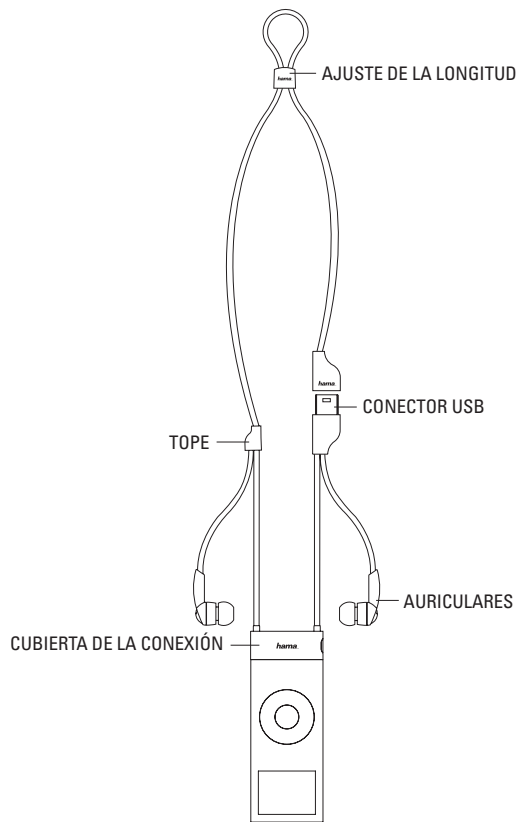


2. Enfichez le connecteur USB du tour de cou dans le port USB de votre ordinateur.

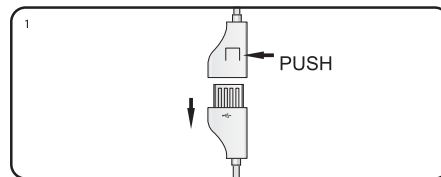


Attention

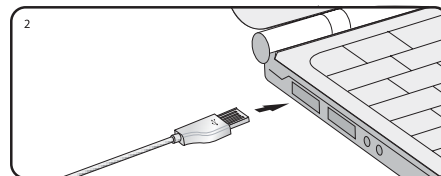
- Lors du branchement du câble USB à votre ordinateur, veillez à ce que la fiche USB soit enfichée dans le bon sens. Le port USB n'est pas toujours orienté dans le même sens sur tous les ordinateurs.
- Ne laissez pas l'iPod pendiller au bout du tour de cou. Il pourrait en effet s'en détacher.



1. Enchufe la conexión de la cinta para el cuello en su iPod nano en el sentido de la flecha. Retire el conector USB de la cubierta de la conexión de la cinta para el cuello en el sentido de la flecha.

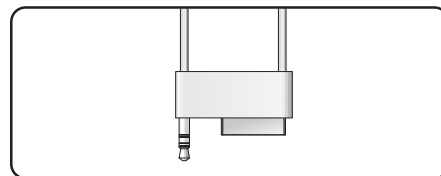
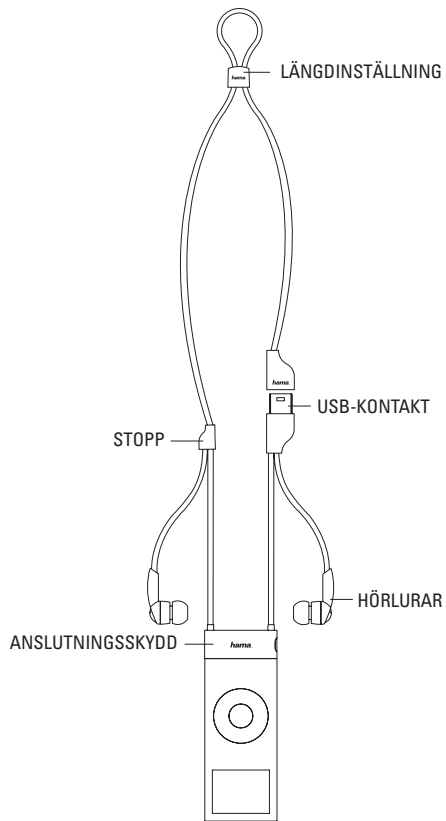


2. Enchufe el conector USB de la cinta para el cuello en la entrada USB de su ordenador.

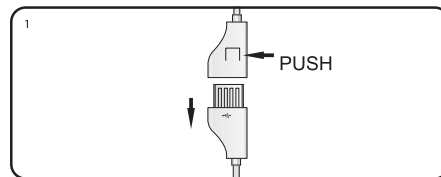


Atención

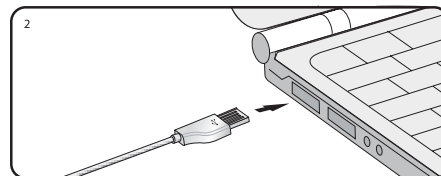
- Asegúrese al conectar el cable USB en su ordenador que el conector USB está enchufado correctamente. La conexión USB no está alineada de igual forma en todos los ordenadores.
- No deje que el iPod se balancee en la cinta del cuello. De esta forma el iPod puede soltarse de la cinta del cuello.



1. Sätt in anslutningen till halsremmen i pilriktningen på iPod nano.
Drag ut USB-kontakten ur anslutningsskyddet på halsremmen i pilriktningen.



2. Sätt i halsremmens USB-kontakt i USB-porten på datorn.



Observera

- Var noga med USB-kontakten sätts i åt rätt håll när USB-kabeln ansluts till datorn. USB-porten är inte utformad på samma sätt på alla datorer.
- Låt inte iPod hänga i halsremmen. Den kan då lossna från remmen.